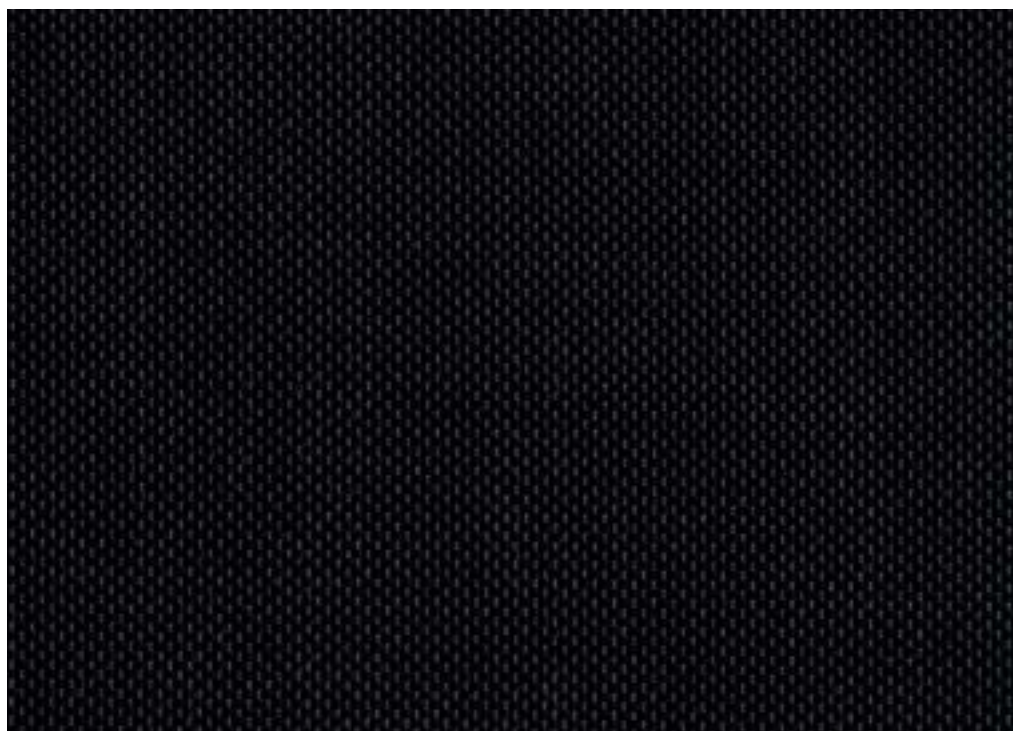


Retta
Louise Sigvardt

Openness factor 3%
Yarn-dyed screen textile



kvadrat shade

Specification details

Openness factor	3%
Composition	100% polyester
Fabric width	Max. 310 cm (122 inches)
Weight	250 g/m ²
Thickness	0.44 mm
IR emissivity	0.84
Light fastness	6-7 (ISO105-B02)
Fire tests	BS 5867 part 2 type B, DIN 4102 B1, IMO FTP code 2010: part 7, NF P 92 507 M1, NFPA 701
Environment	GREENGUARD Gold, STANDARD 100 Class IV by OEKO-TEX®, Environmental Product Declaration (EPD), Health Product Declaration (HPD). Comply with REACH and RoHS. Free of intentionally added PFAS. Halogen free, Phthalate free, Formaldehyde free, Antimicrobials free, PVC free.

Technical details

Colour	Optical properties acc. to EN 14500:2021 and EN 14501:2021					
	Rs (%)	Ts (%)	Tv (%)	Tuv (%)	Ra	Glare control rating
111	54	40	39	18	97	0
131	38	26	23	11	92	1
141	28	19	16	6	98	1
161	15	10	9	6	98	2
191	26*	21	3	4	98	3
221	48	32	30	9	88	0
431	43	29	25	7	78	0
531	35	24	15	6	66	1

Colour	Solar control double glazing G			Solar control triple glazing I		
	gtot/SHGC (%)	Utot-value (W/m ² K)	Tv, tot (%)	gtot/SHGC (%)	Utot-value (W/m ² K)	Tv, tot (%)
111	18	0.83	32	18	0.55	30
131	22	0.83	18	23	0.55	17
141	25	0.83	12	24	0.55	11
161	27	0.83	7	27	0.55	6
191	29	0.83	2	28	0.55	2
221	21	0.83	23	21	0.55	22
431	22	0.83	20	22	0.55	18
531	25	0.83	11	24	0.55	10

Rs: Solar reflection | **Ts:** Solar transmission | **As:** Solar absorption calculation: 100 - Rs - Ts = As

Tv: Visual light transmission | **Tuv:** UV transmission | **Ra:** Colour rendering index

Glazing G: g=33% / U=1.0 / Tv=70% (acc. to EN14501: 2021) | **Glazing I:** g=31% / U=0.6 / Tv=64% (with ref. panes acc. to EN 14501:2021)

gtot/SHGC: Solar heat gain through total fenestration | **Utot:** Thermal heat loss (or gain) through total fenestration

Tv, tot: Total light transmission through total fenestration

*Colour 191 is a so called 'cool black', due to the used dye pigments. The relatively high reflectance indicates this.

These are approximate values. Individual results may vary slightly. The technical data are based on average data and are subject to production tolerances. Subject to misprints, errors and technical modifications.

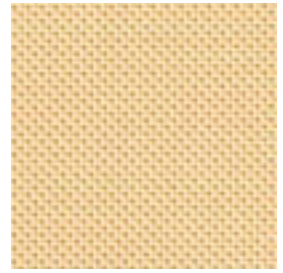
Retta



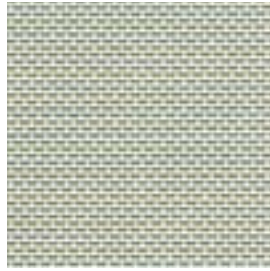
531



221



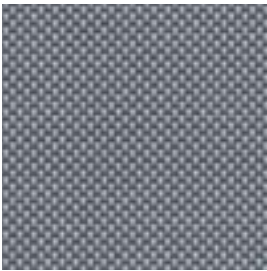
431



131



111



141



161



191



Retta

Design: Louise Sigvardt

DK

Anvendelse Rullegardin.

Beskrivelse 100% polyester. Bredde max. 310 cm. Vægt 250 g/m². Tykkelse 0.44 mm. Garnfarvet. Nuanceforskel kan forekomme.

Lysægtighed 6-7 (ISO 105-B02).

Flammesikring BS 5867 part 2 type B, DIN 4102 B1, IMO FTP code 2010: part 7, NF P 92 507 M1, NFPA 701 (Kopi af testrapport kan rekvireres).

Vedligeholdelse Se ISO symboler. Rengør med en tør eller opvredet klud. Brug kun rent vand. Kan også børstes eller støvsuges (nedsat sug) med børste mundstykke. Ved kraftigere tilsmudsning anbefales det at kontakte professionel renseri.

UK

Application Roller blind.

Description 100% polyester. Width max. 310 cm (122 inches). Weight 250 g/m². Thickness 0.44 mm. Yarn dyed. Colour differences may occur.

Lightfastness 6-7 (ISO 105-B02)

Flame resistance BS 5867 part 2 type B, DIN 4102 B1, IMO FTP code 2010: part 7, NF P 92 507 M1, NFPA 701 (Copy of test report available).

Care See the ISO symbols. Clean with a dry or moist wrung cloth. Only use clean water. Can also be brushed or carefully vacuumed (reduce suction power) with a brush nozzle. In case of considerable staining, we recommend contacting a professional dry cleaner.

DE

Anwendungsbereich Rollos.

Beschreibung 100% Polyester. Breite max. 310 cm. Gewicht 250 g/m². Dicke 0.44 mm. Garngefärbt. Farbunterschiede können vorkommen.

Lichtechtheit 6-7 (ISO 105-B02)

Flammschutz BS 5867 part 2 type B, DIN 4102 B1, IMO FTP code 2010: part 7, NF P 92 507 M1, NFPA 701 (Testbericht verfügbar).

Pflege Siehe ISO Pflegesymbole. Mit einem trockenen oder feuchten, ausgedrückten Tuch reinigen. Nur sauberes Wasser verwenden. Reinigung durch vorsichtiges Abbürsten oder saugen mit Bürstenaufsatz und reduzierter Leistung möglich. Bei starker Verschmutzung empfehlen wir einen professionellen Reinigungsdienst.

NL

Toepassing Rolgordijn.

Omschrijving 100% polyester. Breedte max. 310 cm. Gewicht 250 g/m². Dikte 0.44 mm. Garengeverfd. Kleurverschillen kunnen optreden.

Lichtechtheid 6-7 (ISO 105-B02)

Brandwerendheid BS 5867 part 2 type B, DIN 4102 B1, IMO FTP code 2010: part 7, NF P 92 507 M1, NFPA 701 (Op aanvraag sturen wij u graag een kopie van het testrapport).

Onderhoud Zie de ISO symbolen. Schoon deppen met een droge of goed uitgewrongen, vochtige doek. Alleen schoon water gebruiken. Kan ook schoongemaakt worden door middel van een borstel of een stofzuiger met borstelstuk op lage kracht. In het geval van serieuze vlekvorming, raden we aan contact op te nemen met een professionele reiniger.

FR

Domaine d'utilisation Store.

Description 100% polyester. Largeur max. 310 cm. Poids 250 g/m². Épaisseur 0.44 mm. Teinture sur fil. Ecarts des coloris possibles.

Résistance à la lumière 6-7 (ISO 105-B02)

Normes au feu BS 5867 part 2 type B, DIN 4102 B1, IMO FTP code 2010: part 7, NF P 92 507 M1, NFPA 701 (La copie du compte rendu des tests est disponible sur demande).

Entretien Voir les symboles ISO. Nettoyez avec un chiffon sec ou chiffon humide bien essoré. Utilisez uniquement de l'eau propre. Le tissu peut aussi être brossé ou aspiré avec soin (puissance d'aspiration réduite) avec un embout en forme de brosse. Dans le cas où le tissu a été fortement taché, nous suggérons de contacter un pressing professionnel.

IT

Destinazione d'uso Tende a rullo.

Caratteristiche 100% poliestere. Altezza max. 310 cm. Peso 250 g/m². Spessore 0.44 mm. Tinto in filo. Possibili differenze per colore.

Resistenza alla luce 6-7 (ISO 105-B02)

Ignifugazione BS 5867 part 2 type B, DIN 4102 B1, IMO FTP code 2010: part 7, NF P 92 507 M1, NFPA 701 (Disponibile copia del test).

Manutenzione Per favore seguire simboli ISO. Pulire con un panno asciutto o umido strizzato. Utilizzare solo acqua pulita. Può anche essere spazzolato oppure accuratamente aspirato (ridurre la potenza di aspirazione) con un ugello a spazzola. In caso di macchie considerevoli, si consiglia di contattare un lavasecco professionale.

ES

Aplicación Estor.

Descripción 100% poliéster. Anchura max. 310 cm. Peso 250 g/m². Grosor 0.44 mm. Teñido en hilo. Posibles variaciones de color.

Resistencia a la luz 6-7 (ISO 105-B02)

Resistencia al fuego BS 5867 part 2 type B, DIN 4102 B1, IMO FTP code 2010: part 7, NF P 92 507 M1, NFPA 701 (Copia del informe de ensayos disponible).

Limpieza Consulte los símbolos ISO. Limpiar con un paño seco o ligeramente humedecido. Utilizar únicamente agua. También se puede cepillar o aspirar con cuidado (baja intensidad de succión) con una boquilla de cepillo. En caso de manchas considerables, recomendamos contactar con un profesional de limpieza.

SE

Användning Rullgardin.

Beskrivning 100% polyester. Aluminiumbaksida. Bredd max. 310 cm. Vikt 250 g/m². Tjocklek 0.44 mm. Garnfärgad. Viss nyansskillnad kan förekomma.

Ljushärdighet 6-7 (ISO 105-B02)

Flammskydd BS 5867 part 2 type B, DIN 4102 B1, IMO FTP code 2010: part 7, NF P 92 507 M1, NFPA 701 (Kopia av testrapport finns tillgänglig vid förfrågan).

Underhåll Se ISO symboler. Rengör med en torr eller fuktad trasa. Använd endast rent vatten. Kan även borstas eller försiktigt dammsugas med ett borstmunstycke. I händelse av fläckar rekommenderar vi att du lämnar in rullgardinen till kemtvätt.

ZH

产品应用 遮光卷帘。

产品详情 100% 聚酯纤维。幅宽：最宽310厘米。克重：250 克/平方米。厚度：0.44毫米。色织。可能出现色差。

日晒色牢度：6-7。(ISO 105-B02)。

阻燃性 BS 5867 第 2 部分 B 型、DIN 4102 B1、IMO FTP 代码 2010：第 7 部分、NF P 92 507 M1、NFPA 701 (可提供测试报告副本)。

保养须知 请参照ISO标识。用干布或拧干的湿布清洁。只可用清水。也可用毛刷或毛刷吸嘴(减少吸力)小心清理。如脏污较严重，建议联系专业干洗服务。



STANDARD
100
15.HNL.57853
Hohenstein



5 year
warranty

Contact and further information kvadrat.dk

Retta

Retta by Louise Sigvardt is a woven, yarn-dyed screen textile made using up to three differently coloured yarns, creating a rich and natural expression. The refined weave adds depth and visual interest when viewed both up close and from a distance. As a non-metallised textile, the colour choice of *Retta* shapes the degree of outward view.

Retta is part of the Retta family, together with the metallised textile *Silvretta* and the light-excluding textile *Retta Blockout*. The family offers a complementary range of roller blind solutions, combining a shared woven character with different levels of light and solar control.

Louise Sigvardt

Louise Sigvardt is a co-founder of the acclaimed Bunn Studio, working across fashion, architecture, and design. In recent years, they have collaborated with the celebrated fashion brands Everlane and Marimekko, and the furniture house Radnor. Their work has been recognised with numerous awards and showcased in leading international magazines.

Louise's background as a textile designer is evident in Bunn's rich yet minimal approach to design where texture is always a key element. For Louise, design is an immersive experience that begins with a narrative, an emotion or a captivating visual. She cites the application of textiles as the motivation in her career; *"I found out that I loved working with textiles, but what fascinates me even more, are all the different areas of application."*